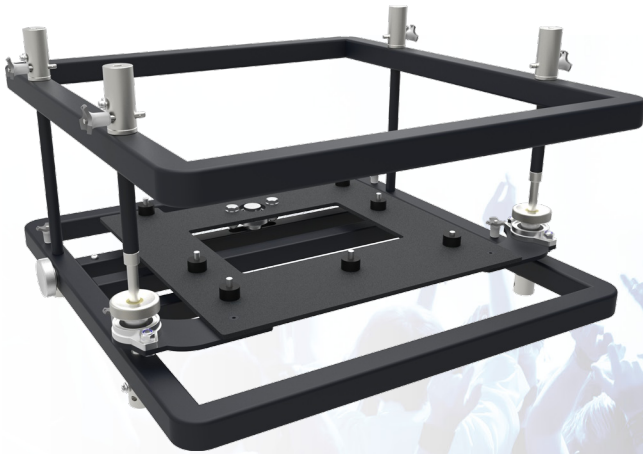


## Stack frame



### 112.1200 Stack frame (Small 200) Max. 500x560x200 (WxLxH)

Early 2012 SmartMetals noticed an increasing demand for stack frames for projectors up to 50 kg. This to mount and fine adjust heavy projectors in the truss, and to stack projectors for multi-projection. With multi-projection it is preferred to position the projectors together as close as possible; the ability to choose between several heights in the stack frames, suited to your projector type, was therefore one of the features we focussed to include. Our range of stack frames presents 3 basic sizes with the possibility to select the height of your projector and a projector specific bracket to create a perfect fit.

## Stack frame

### Features

**Maximum length:** 560 mm

**Weight:** 26.00 kg

**Colour:** Black

**Maximum load:** 94 kg

**Bracket/interface:** Excluded

**Type bracket/interface:** Projector specific

**Rotation:** +3.5° tot -3.5°

**Tilt function:** +5° tot -5° / +2.5° tot -7°

**Other information:** Max. stacked weight under top frame is 275 kg.

