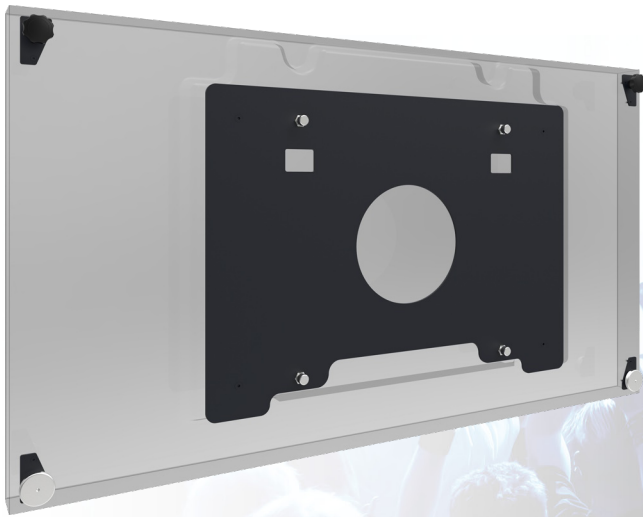


Barco MVD-5521 montageset



082.5070-1301 Smart Rental Frame - Barco MVD-5521 mounting set

The mounting set (082.5x70) includes four coupling bolts and special fastening plates with star knobs to mount the alignment plates. The alignment plates are especially designed to align the corners of the displays with one another. With wall installation, the bracket frames fitted with a screen specific bracket, are screwed to the wall. Through special draw latches they are fastened to neighbouring frames. When installing on the floor the floor frames are levelled on their location, coupling frames are fastened to these frames with camlocks, after which the bracket frames incl. screen specific brackets are connected with draw latches. When planning to fly the VideoWall in the truss, the floor frames are replaced by stabilizer frames and at the top of the coupling and bracket frames special fly sets are attached. These fly sets include a dept adjustment to level the VideoWall in the truss. The screen specific brackets include four keyholes in which the display (fitted with 4 coupling bolts) is hung. These innovations result in an impressive VideoWall which is now even easier and more precise to install then before.

Barco MVD-5521 montageset

Features

Weight: 9.51 kg

Colour: Black, Stainless Steel

Screen position: Landscape, Portrait

Inch range: 55 inch Barco

Mobile / fixed: Fixed

Bracket/interface: Excluded

Type bracket/interface: Screen specific

Other information: Combine with bracket 082.5040-1301

